

# ALDERLEA SERIES

PREMIUM CAST-IRON OVER STEEL  
CATALYTIC-FREE WOOD STOVES

**PACIFIC  
ENERGY**



ALDERLEA T4 LE  
ALDERLEA T4 CLASSIC LE  
ALDERLEA T5 LE  
ALDERLEA T5 CLASSIC LE  
ALDERLEA T6 LE



# ALDERLEA

FREESTANDING CAST-IRON OVER STEEL STOVES

CATALYTIC-FREE TECHNOLOGY

✓ MORE DURABLE

✓ MORE RELIABLE



## Alderlea Series CAST-IRON OVER STEEL

With elegant, historic styling that adds to the decor of any room, the Alderlea Series LE wood stoves combine the best of cast iron and steel stoves: offering radiant and convective heat, with a concealed cooktop\* and a huge glass window for a clean view of the flame. It's an easy-to-light, easy-to use, long-burning wood heater with old world charm and unmatched durability.

\*available only on Alderlea T5 LE and T6 LE stoves



ALDERLEA T4 LE



ALDERLEA T5 LE



ALDERLEA T6 LE

## SPECS & FEATURES

### ALDERLEA T4 LE ALDERLEA T4 CLASSIC LE

For spaces up to 1500 sq. ft.

Heat Output Cord Wood

**56,000 BTU**

23,200 BTU EPA Test Fuel

Efficiency (HHV)	72%
Emissions	1.9 gm/hr.
Log Size (recommended)	16"
Log Size (max)	17"
Firebox Size	1.6 cu.ft.
Viewing Area	152 sq.in.

### ALDERLEA T5 LE ALDERLEA T5 CLASSIC LE

For spaces up to 2000 sq. ft.

Heat Output Cord Wood

**72,000 BTU**

38,200 BTU EPA Test Fuel

Efficiency (HHV)	71.3%
Emissions	1.8 gm/hr.
Log Size (recommended)	16"
Log Size (max)	18"
Firebox Size	2.1 cu.ft.
Viewing Area	163 sq.in.

### ALDERLEA T6 LE

For spaces up to 3000 sq. ft.

Heat Output Cord Wood

**99,000 BTU**

41,275 BTU EPA Test Fuel

Efficiency (HHV)	74%
Emissions	1.8 gm/hr.
Log Size (recommended)	18"
Log Size (max)	20"
Firebox Size	3.0 cu.ft.
Viewing Area	185 sq.in.

**EPA2020  
CERTIFIED**

**2**

**GRAMS  
PER  
HOUR  
OR LESS**

All Pacific Energy Wood Stoves come standard with these industry leading features:

- **EPA2020 Certified**
- **Reliable, durable catalytic-free technology**
- **High capacity baffle system**
- **Multi-port combustion air injection system**
- **Air wash system for super clean ceramic glass**
- **Inside and outside combustion air capable**
- **Floating firebox for extended stove life**
- **Single-Lever Air Control**
- **Mobile Home Approved**



#### WARMING SHELVES

In true pioneer style, Alderlea T5 and T6 wood stoves\* have a practical side. The Alderlea allows meals to be prepared effortlessly with swing-out warming shelves to reveal a concealed cooking surface – take on the next power outage with cooking and warming space to spare!

\*Available on the Alderlea T5 LE, Alderlea T5 Classic LE, & Alderlea T6 LE

#### ALDERLEA T4 LE

##### STANDARD FEATURES

Extended Burn Technology  
304 Stainless Steel Baffle, Tubes, rails and flame shield  
Boost air for easy lighting  
Easy to use ash disposal system  
Fits close wall clearances without heat shields  
6" flue  
East-West loading

##### ALDERLEA T4 CLASSIC LE

Alderlea T4 Classic LE is available in two porcelain enamel colours – Majolica and Ivory

##### PERFORMANCE OPTIONS

Temperature-Actuated Variable-Speed Blower

#### ALDERLEA T5 LE

##### STANDARD FEATURES

Extended Burn Technology (EBT)  
304 Stainless Steel Baffle, insulation cover, rails and flame shield  
Boost air for easy lighting  
Easy to use ash disposal system  
Swing out food warming shelves  
Concealed cooktop fits 6" x 13" pan  
Fits close wall clearances without heat shields  
6" flue  
North-South loading

##### ALDERLEA T5 CLASSIC LE

Alderlea T5 Classic LE is available in three porcelain enamel colours – Majolica, Sunset Red, and Antique White

##### PERFORMANCE OPTIONS

Temperature-Actuated Variable-Speed Blower

#### ALDERLEA T6 LE

##### STANDARD FEATURES

Extended Burn Technology (EBT)  
304 Stainless Steel Baffle, insulation cover, rails and flame shield  
Boost air for easy lighting  
Easy to use ash disposal system  
Metallic black cast iron finish  
Swing out food warming shelves  
Concealed cooktop fits 6" x 13" pan  
Fits close wall clearances without heat shields  
6" flue  
North-South loading

##### PERFORMANCE OPTIONS

Temperature-Actuated Variable-Speed Blower

# ALDERLEA CLASSIC

FREESTANDING CAST-IRON OVER STEEL STOVES

EASIER TO OPERATE

ENVIRONMENTALLY FRIENDLY



## ALDERLEA CLASSIC LE

The timeless beauty of cast iron with the added grace of porcelain enamel - the Alderlea Classic Wood Stoves are full of old-world charm and elegance, and boast an outstanding list of standard features.

### ALDERLEA T4 CLASSIC LE AVAILABLE IN



Ivory



Majolica

### ALDERLEA T5 CLASSIC LE AVAILABLE IN



Antique White



Majolica



Sunset Red



ALDERLEA T5 CLASSIC LE  
Antique White



Ivory



Majolica



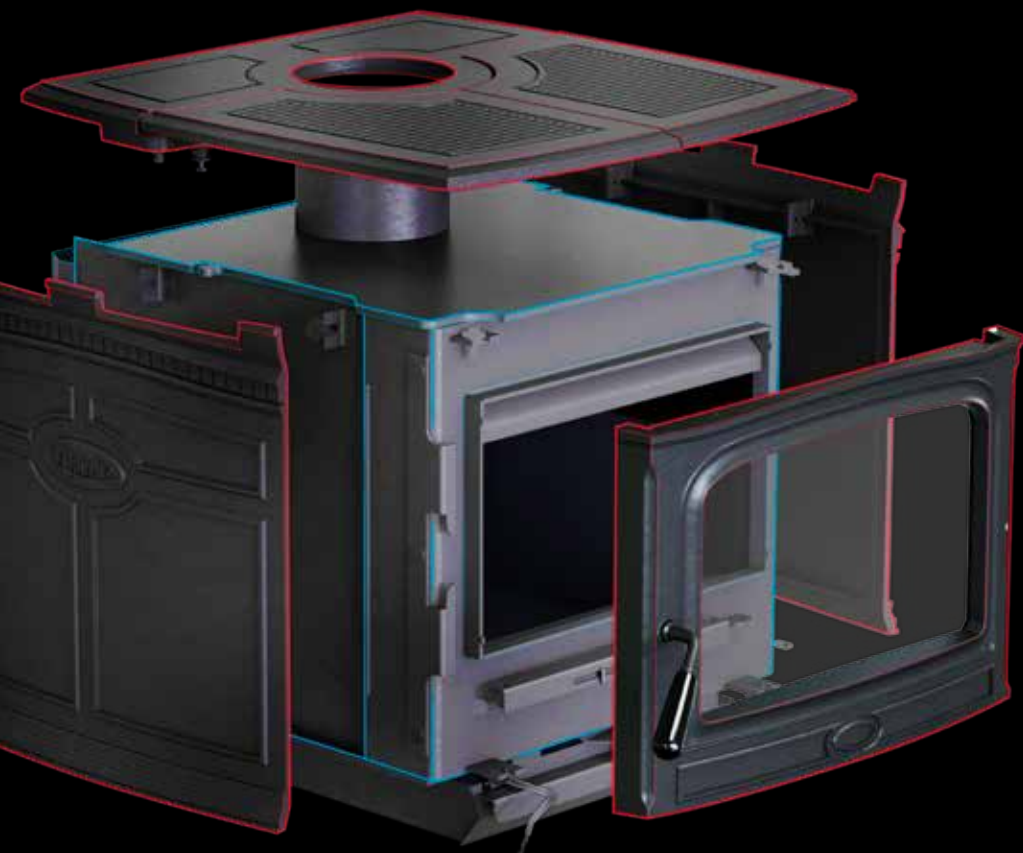
Sunset Red



Majolica

ALDERLEA T4 CLASSIC LE

ALDERLEA T5 CLASSIC LE



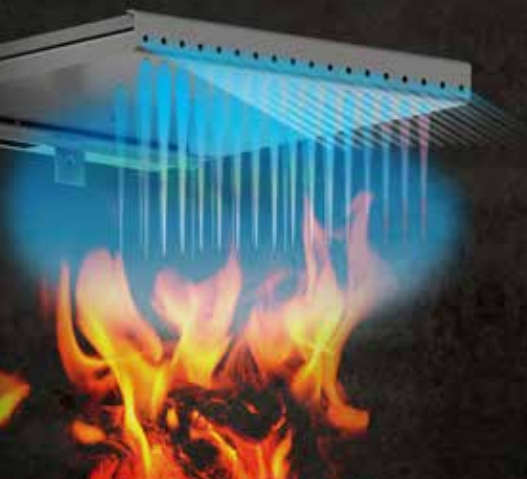
 **CAST IRON OVER STEEL**

Until we pioneered the Alderlea line, and its revolutionary iron-wrapped steel firebox, a cast-iron stove was just that: cast iron. The Alderlea design makes the most of each metal: the steel stove and floating firebox is free to expand and contract, and its design maximizes convective heat efficiency, while the cast iron wrapping provides radiant heat. This superior system greatly extends longevity over an all cast stove. Metal fatigue is no longer a factor, allowing us to offer the industry's first lifetime warranty on a cast stove.

This technical innovation lives "under the skin" of the Alderlea line, which maintains the beloved traditional woodstove appearance. We say it's "powered by design, and crafted by tradition".

 **BAFFLE SYSTEM**

Pacific Energy leads the industry in premium catalytic-free clean burn technology. Our unique high capacity baffle system preheats secondary combustion air for an extremely effective reburn. By burning the combustible elements in the air, we improve our stove's environmental performance while significantly reducing the amount of wood that is consumed.



 **FLOATING FIREBOX**

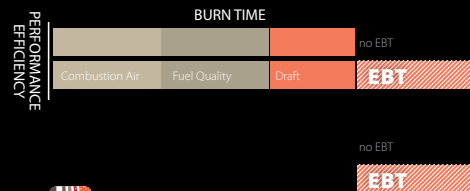
All fireboxes are subjected to wild extremes of temperatures. Solidly designed with steel brick support rails, our legendary floating system allows key parts to freely expand and contract to drastically reduce metal fatigue and add years of life to the entire appliance. The high capacity stainless steel baffle (part of the clean-burning secondary combustion system) and the flame shield (which protects the stove top from intense heat) are integral components of our legendary floating firebox system.

 **SELF SEALING ASH DUMP SYSTEM**

Our self-sealing ash dump system, with its spring-loaded trap door provides a time saving, hassle-free ash removal solution that, frankly, has yet to be equaled. Pacific Energy's machined steel, spring loaded ash removal systems is opened from outside the stove and closes automatically for safety and convenience when you're done.

 **EBT2 EXTENDED BURN**

EBT2 (the second generation of Extended Burn Technology) is field proven to be highly effective at controlling the secondary burn system, extending burn times and reducing overall emissions.



 **AIR WASH**

Pacific Energy developed the first effective airwash manifold systems, a design that flows pre-heated air to the glass surface to keep it clean. A refined design now creates a high-pressure zone in the center and forces air to flow from above and across the glass. Even at low air settings, we are confident that our airwash system is the most effective available. And that our glass doors are among the cleanest in the industry.



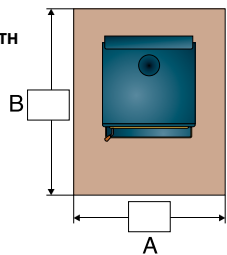
## FLOOR PROTECTOR DIMENSIONS

### ALDERLEA T4 LE

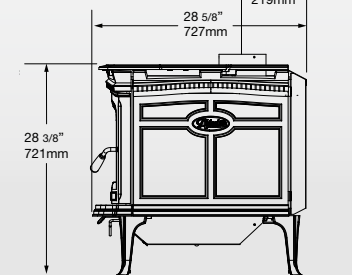
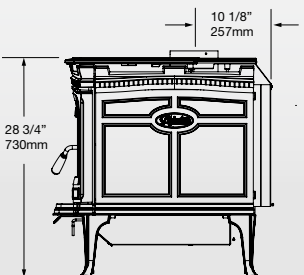
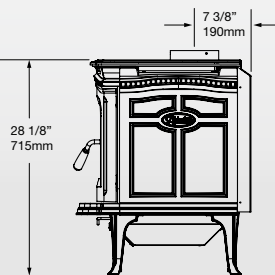
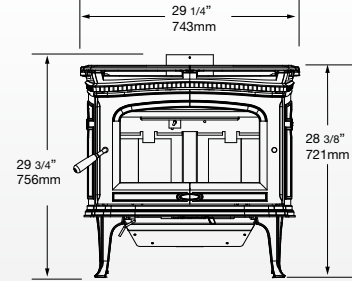
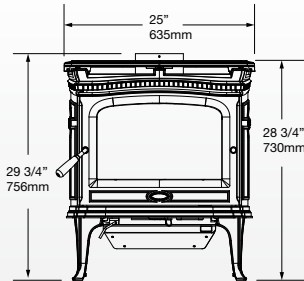
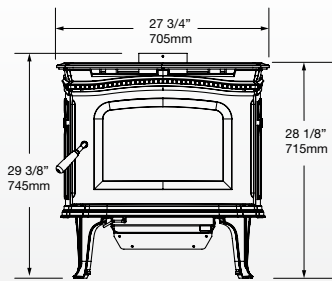
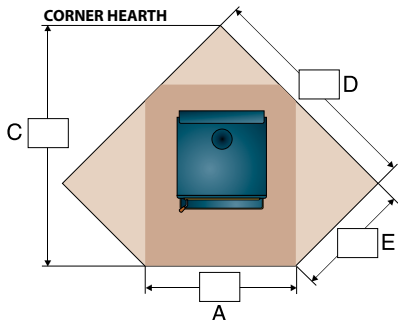
### ALDERLEA T5 LE

### ALDERLEA T6 LE

#### STRAIGHT HEARTH



#### CORNER HEARTH



## CANADA

	ALDERLEA T4 LE & ALDERLEA T4 CLASSIC LE					ALDERLEA T5 LE & ALDERLEA T5 CLASSIC LE					ALDERLEA T6 LE				
	A	B	C	D	E	A	B	C	D	E	A	B	C	D	E
Minimum (Not extended to back wall)	44"	45"	-	-	-	40"	50 3/4"	-	-	-	43"	51"	-	-	-
Residential, single wall, vertical connector	44"	47"	58 3/4"	57 1/8"	26"	40"	54 3/4"	62 3/8"	58 1/4"	30"	43"	52"	62 7/8"	59 5/8"	29 1/4"
Residential, double wall, vertical connector	44"	45"	55 7/8"	55 1/8"	24"	40"	47 3/4"	58 1/8"	55 1/4"	27"	43"	50 1/2"	61 3/8"	58 5/8"	28 1/4"
Alcove, double wall, connector	44"	45"	-	-	-	40"	52 3/4"	-	-	-	43"	53"	-	-	-
Mobile home	44	45"	55 7/8"	55 1/8"	24"	40"	50 3/4"	58 1/8"	55 1/4"	27"	43"	53"	65 5/8"	61 5/8"	31 1/4"

## USA

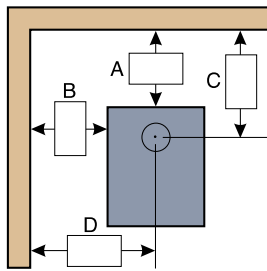
	ALDERLEA T4 LE & ALDERLEA T4 CLASSIC LE					ALDERLEA T5 LE & ALDERLEA T5 CLASSIC LE					ALDERLEA T6 LE				
	A	B	C	D	E	A	B	C	D	E	A	B	C	D	E
Minimum (Not extended to back wall)	34"	35"	-	-	-	34"	40 3/4"	-	-	-	36"	41"	-	-	-
Residential, single wall, vertical connector	34"	45"	56 3/4"	52 1/8"	28 1/8"	34"	52 3/4"	60 3/8"	54 3/4"	30 5/8"	36"	50"	60 7/8"	55 3/4"	30 1/4"
Residential, double wall, vertical connector	34"	43"	53 7/8"	50 1/8"	26 1/8"	34"	45 3/4"	56 1/8"	51 3/4"	27 5/8"	36"	48 1/2"	59 3/8"	54 3/4"	29 1/4"
Alcove, double wall, connector	34"	43"	-	-	-	34"	45 3/4"	-	-	-	36"	51"	-	-	-
Mobile home	34	43"	53 7/8"	50 1/8"	26 1/8"	34"	45 3/4"	56 1/8"	51 3/4"	27 5/8"	36"	51"	63 5/8"	57 3/4"	32 1/4"

## CLEARANCES TO COMBUSTIBLES

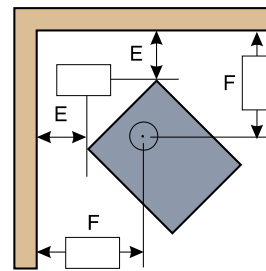
		From top of stove to ceiling	STRAIGHT (VERTICAL CONNECTOR)				CORNER		ALCOVE			
			A	B	C	D	E	F	G	H	I	J
RESIDENTIAL SINGLE WALL CONNECTOR	ALDERLEA T4 & T4 CLASSIC LE	56"	10"	10"	17 3/8"	23 7/8"	7"	20 1/2"	10"	10"	17 3/8"	23 7/8"
	ALDERLEA T5 & T5 CLASSIC LE	55 1/4"	8"	14"	18"	26"	7"	21"	N/A	N/A	N/A	N/A
	ALDERLEA T6 LE	54"	9"	14"	17 5/8"	28 3/4"	6"	20 1/8"	N/A	N/A	N/A	N/A
RESIDENTIAL DOUBLE WALL CONNECTOR	ALDERLEA T4 & T4 CLASSIC LE	56"	8"	8"	15 3/8"	21 7/8"	5"	18 1/2"	8"	8"	15 3/8"	21 7/8"
	ALDERLEA T5 & T5 CLASSIC LE	55 1/4"	5"	14"	15"	26"	4"	18"	5"	14"	15"	26"
	ALDERLEA T6 LE	54"	7 1/2"	13"	16 1/8"	27 5/8"	5"	19 1/8"	10"	16"	18 5/8"	30 5/8"
MOBILE HOME DOUBLE WALL CONNECTOR	ALDERLEA T4 & T4 CLASSIC LE	56"	8"	8"	15 3/8"	21 7/8"	5"	18 1/2"	8"	8"	15 3/8"	21 7/8"
	ALDERLEA T5 & T5 CLASSIC LE	55 1/4"	5"	14"	14"	26"	4"	18"	N/A	N/A	N/A	N/A
	ALDERLEA T6 LE	54"	10"	18"	18 5/8"	32 5/8"	8"	22 1/8"	N/A	N/A	N/A	N/A



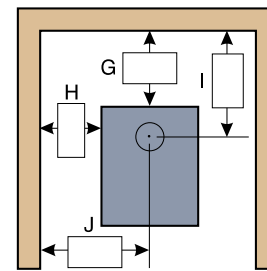
Pacific Energy is committed to continuous product improvement and innovation. As a result, appearance and specifications of the products featured in this brochure are subject to change without notice. For more information, please visit [pacificenergy.net](http://pacificenergy.net)



STRAIGHT



CORNER



ALCOVE